

**EPHA2 / EPH Receptor A2 Antibody (aa450-500)**  
**Rabbit Polyclonal Antibody**  
**Catalog # ALS11925****Specification**

---

**EPHA2 / EPH Receptor A2 Antibody (aa450-500) - Product Information**

Application	WB, IHC-P
Primary Accession	<a href="#">P29317</a>
Reactivity	Human, Mouse, Rat, Monkey, Horse, Bovine, Dog
Host	Rabbit
Clonality	Polyclonal
Calculated MW	108kDa KDa
Dilution	WB~~1:1000 IHC-P~~N/A

**EPHA2 / EPH Receptor A2 Antibody (aa450-500) - Additional Information****Gene ID** 1969**Other Names**

Ephrin type-A receptor 2, 2.7.10.1, Epithelial cell kinase, Tyrosine-protein kinase receptor ECK, EPHA2, ECK

**Target/Specificity**

A portion of amino acids 450-500 of human EphA2

**Reconstitution & Storage**

Short term 4°C, long term aliquot and store at -20°C, avoid freeze thaw cycles.

**Precautions**

EPHA2 / EPH Receptor A2 Antibody (aa450-500) is for research use only and not for use in diagnostic or therapeutic procedures.

**EPHA2 / EPH Receptor A2 Antibody (aa450-500) - Protein Information****Name** EPHA2**Synonyms** ECK**Function**

Receptor tyrosine kinase which binds promiscuously membrane- bound ephrin-A family ligands residing on adjacent cells, leading to contact-dependent bidirectional signaling into neighboring cells. The signaling pathway downstream of the receptor is referred to as forward signaling while the signaling pathway downstream of the ephrin ligand is referred to as reverse signaling. Activated by the ligand ephrin- A1/EFNA1 regulates migration, integrin-mediated adhesion, proliferation and differentiation of cells. Regulates cell adhesion and differentiation through DSG1/desmoglein-1 and inhibition of the ERK1/ERK2 (MAPK3/MAPK1, respectively) signaling

pathway. May also participate in UV radiation-induced apoptosis and have a ligand- independent stimulatory effect on chemotactic cell migration. During development, may function in distinctive aspects of pattern formation and subsequently in development of several fetal tissues. Involved for instance in angiogenesis, in early hindbrain development and epithelial proliferation and branching morphogenesis during mammary gland development. Engaged by the ligand ephrin-A5/EFNA5 may regulate lens fiber cells shape and interactions and be important for lens transparency development and maintenance. With ephrin-A2/EFNA2 may play a role in bone remodeling through regulation of osteoclastogenesis and osteoblastogenesis.

#### **Cellular Location**

Cell membrane; Single-pass type I membrane protein. Cell projection, ruffle membrane; Single-pass type I membrane protein. Cell projection, lamellipodium membrane; Single-pass type I membrane protein. Cell junction, focal adhesion. Note=Present at regions of cell-cell contacts but also at the leading edge of migrating cells (PubMed:19573808, PubMed:20861311). Relocates from the plasma membrane to the cytoplasmic and perinuclear regions in cancer cells (PubMed:18794797).

#### **Tissue Location**

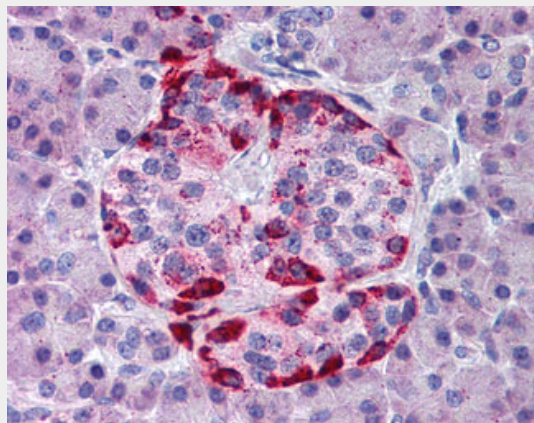
Expressed in brain and glioma tissue and glioma cell lines (at protein level). Expressed most highly in tissues that contain a high proportion of epithelial cells, e.g. skin, intestine, lung, and ovary.

#### **EPHA2 / EPH Receptor A2 Antibody (aa450-500) - Protocols**

Provided below are standard protocols that you may find useful for product applications.

- [Western Blot](#)
- [Blocking Peptides](#)
- [Dot Blot](#)
- [Immunohistochemistry](#)
- [Immunofluorescence](#)
- [Immunoprecipitation](#)
- [Flow Cytometry](#)
- [Cell Culture](#)

#### **EPHA2 / EPH Receptor A2 Antibody (aa450-500) - Images**



Anti-EPHA2 antibody IHC of human pancreas.

#### **EPHA2 / EPH Receptor A2 Antibody (aa450-500) - Background**

Receptor tyrosine kinase which binds promiscuously membrane-bound ephrin-A family ligands

residing on adjacent cells, leading to contact-dependent bidirectional signaling into neighboring cells. The signaling pathway downstream of the receptor is referred to as forward signaling while the signaling pathway downstream of the ephrin ligand is referred to as reverse signaling. Activated by the ligand ephrin-A1/EFNA1 regulates migration, integrin-mediated adhesion, proliferation and differentiation of cells. Regulates cell adhesion and differentiation through DSG1/desmoglein-1 and inhibition of the ERK1/ERK2 (MAPK3/MAPK1, respectively) signaling pathway. May also participate in UV radiation-induced apoptosis and have a ligand- independent stimulatory effect on chemotactic cell migration. During development, may function in distinctive aspects of pattern formation and subsequently in development of several fetal tissues. Involved for instance in angiogenesis, in early hindbrain development and epithelial proliferation and branching morphogenesis during mammary gland development. Engaged by the ligand ephrin-A5/EFNA5 may regulate lens fiber cells shape and interactions and be important for lens transparency development and maintenance. With ephrin-A2/EFNA2 may play a role in bone remodeling through regulation of osteoclastogenesis and osteoblastogenesis.

#### **EPHA2 / EPH Receptor A2 Antibody (aa450-500) - References**

Lindberg R.A.,et al.Mol. Cell. Biol. 10:6316-6324(1990).  
Jin P.,et al.Arthritis Res. Ther. 10:R73-R73(2008).  
Gregory S.G.,et al.Nature 441:315-321(2006).  
Mural R.J.,et al.Submitted (JUL-2005) to the EMBL/GenBank/DDBJ databases.  
Miao H.,et al.Nat. Cell Biol. 2:62-69(2000).